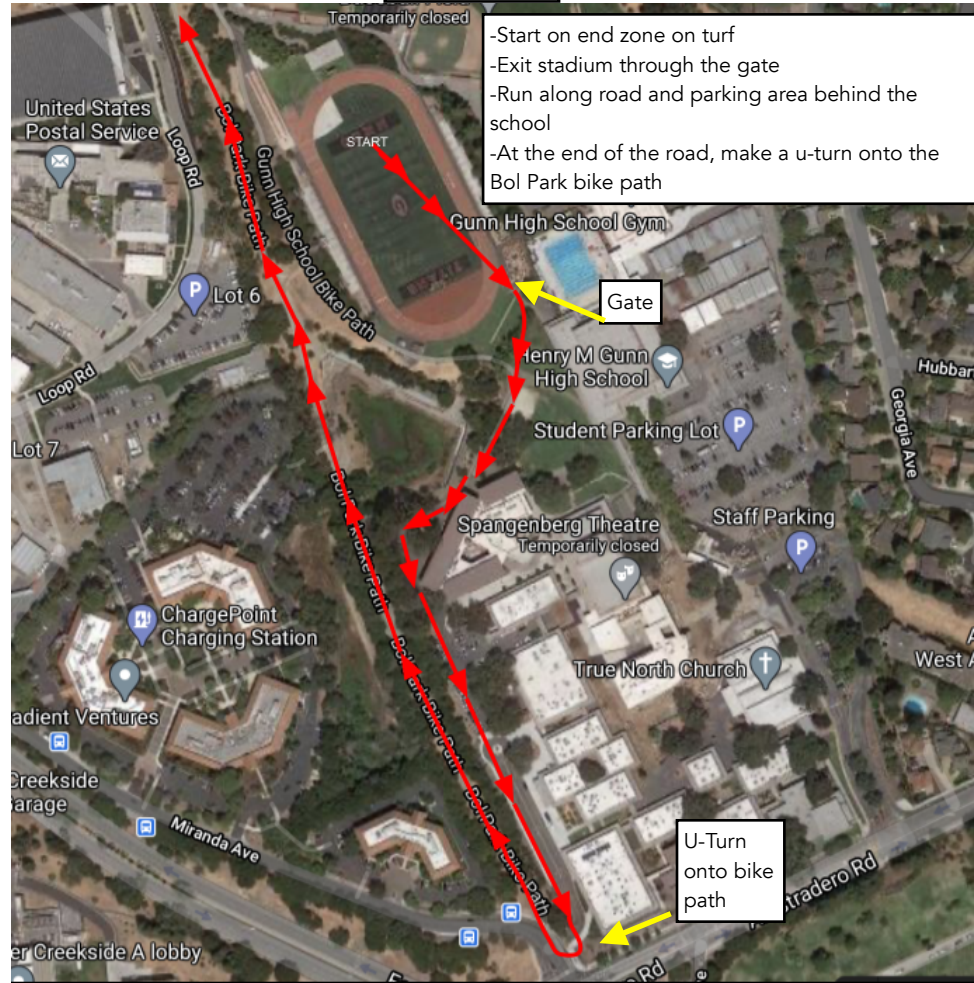


# Bol Park Course 2.18 Miles

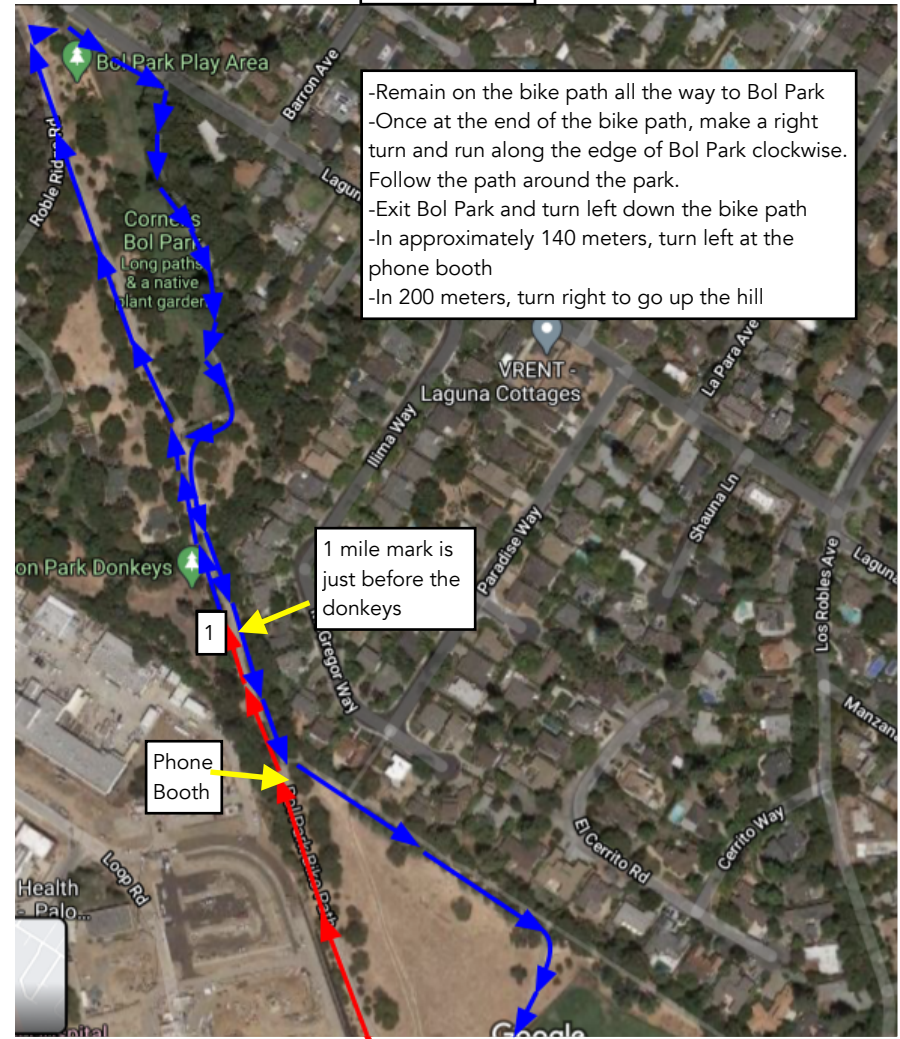
## Part I: The Start

- Start on end zone on turf
- Exit stadium through the gate
- Run along road and parking area behind the school
- At the end of the road, make a u-turn onto the Bol Park bike path

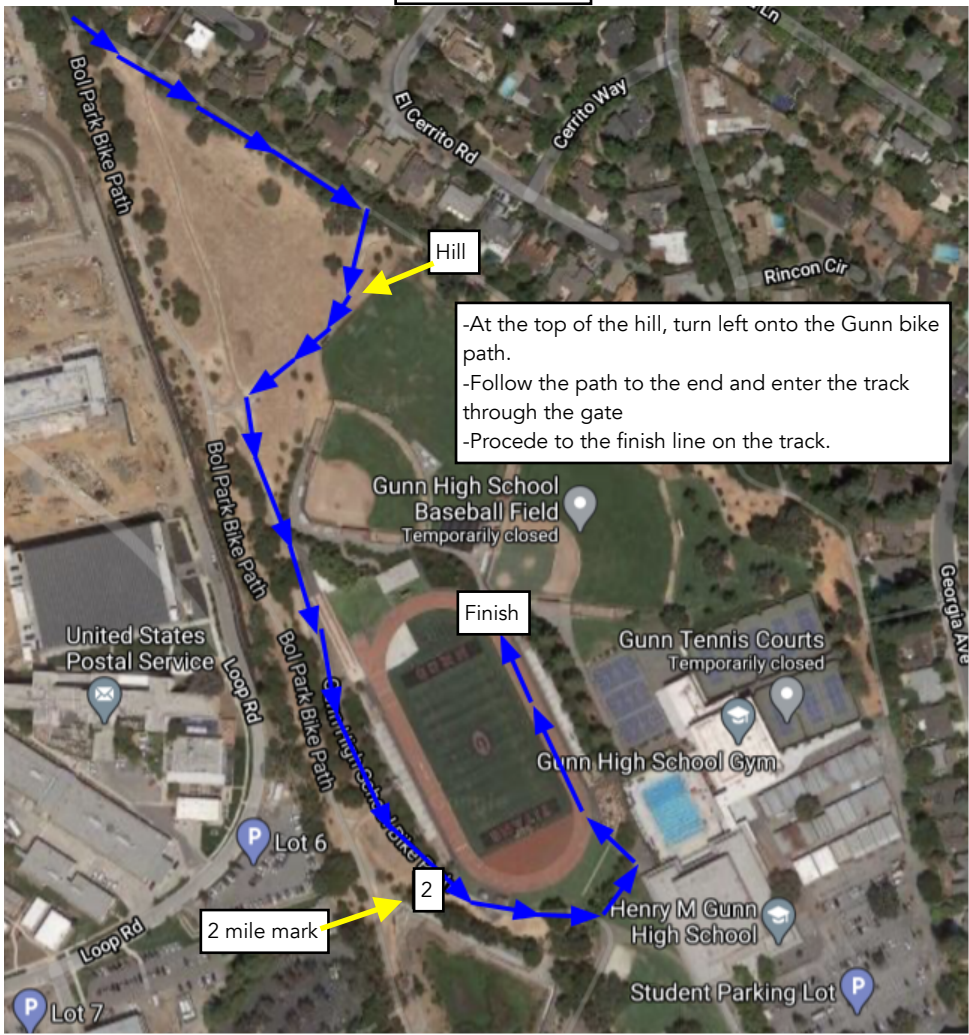


## Part II: Bol Park

- Remain on the bike path all the way to Bol Park
- Once at the end of the bike path, make a right turn and run along the edge of Bol Park clockwise. Follow the path around the park.
- Exit Bol Park and turn left down the bike path
- In approximately 140 meters, turn left at the phone booth
- In 200 meters, turn right to go up the hill



### Part III: The Finish



Hill

- At the top of the hill, turn left onto the Gunn bike path.
- Follow the path to the end and enter the track through the gate
- Proceed to the finish line on the track.

Finish

2 mile mark

2

Gunn High School  
Baseball Field  
Temporarily closed

Gunn Tennis Courts  
Temporarily closed

Gunn High School Gym

Henry M Gunn  
High School

Student Parking Lot

United States  
Postal Service

Bol Park Bike Path

Bol Park Bike Path

Gunn High School  
Baseball Field  
Temporarily closed

Gunn Tennis Courts  
Temporarily closed

Gunn High School Gym

Henry M Gunn  
High School

Student Parking Lot

Gunn High School  
Baseball Field  
Temporarily closed

Hill

- At the top of the hill, turn left onto the Gunn bike path.
- Follow the path to the end and enter the track through the gate
- Proceed to the finish line on the track.

Finish

2 mile mark

2

Bol Park Bike Path

Bol Park Bike Path

United States  
Postal Service

Loop Rd

El Cerrito Rd

Cerrito Way

Rincon Cir

Georgia Ave

Lot 6

Lot 7

P

P

P

P